

RECLAIMED ATLANTIC SALMON HABITAT

AFTER 2015 SAW MILL DAM REMOVAL ON THE BOQUET RIVER, NY

In **2016**, one year after dam removal, salmon nests, called redds, were found as far upstream as here.

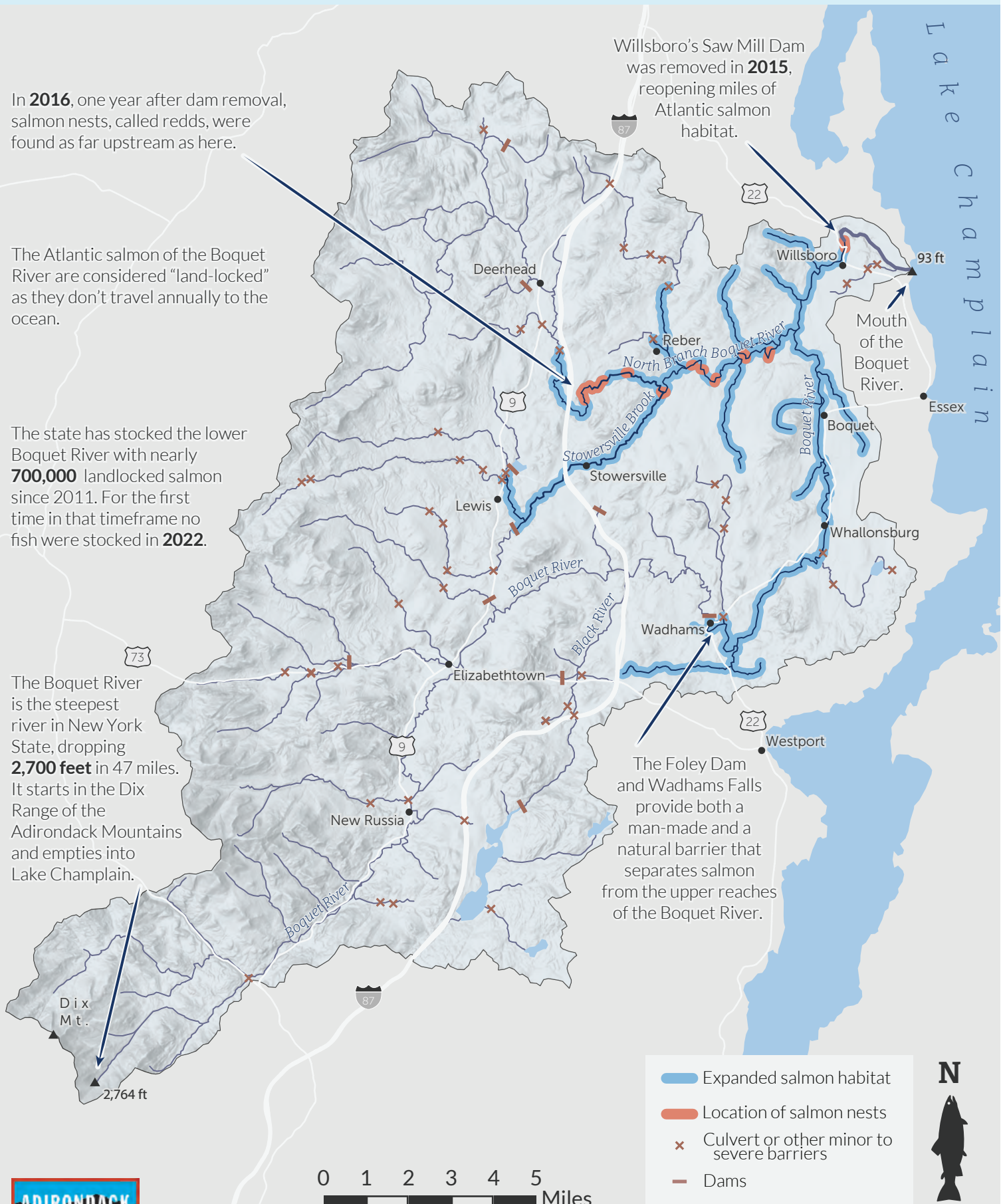
The Atlantic salmon of the Boquet River are considered “land-locked” as they don’t travel annually to the ocean.

The state has stocked the lower Boquet River with nearly **700,000** landlocked salmon since 2011. For the first time in that timeframe no fish were stocked in **2022**.

The Boquet River is the steepest river in New York State, dropping **2,700 feet** in 47 miles. It starts in the Dix Range of the Adirondack Mountains and empties into Lake Champlain.

Willsboro’s Saw Mill Dam was removed in **2015**, reopening miles of Atlantic salmon habitat.

The Foley Dam and Wadhams Falls provide both a man-made and a natural barrier that separates salmon from the upper reaches of the Boquet River.



- Expanded salmon habitat
- Location of salmon nests
- x Culvert or other minor to severe barriers
- Dams

